

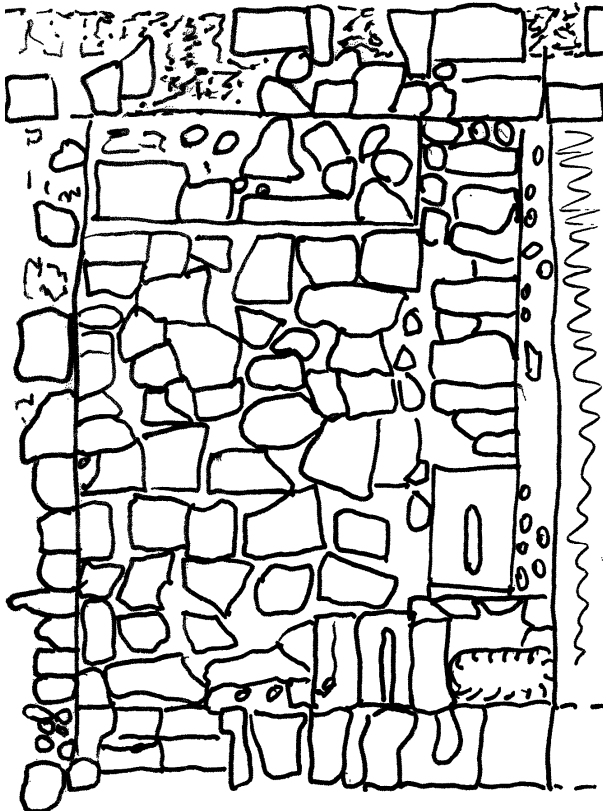
Hippos (Sussita) Excavations 2014 – 15th Season

Daily Log + Drawing

Date: 1 July 2014 Area: NIP Manager: Schuler

Squares	DQ39			
Loci				
Baskets				
Walls 1267, 1296, 1917				
Floors				

1. Continued work in DQ39
 - a. Goal = to identify the SE corner of the HTyche
 - b. Basket =
 - c. Starting elevation = 131.08
 - d. Ending elevation = 131.08
 - e. Cleaned, photographed, and drew DQ39



f. Observations

- i. Part of the east wall (1298) abuts the south wall (1915)
- ii. Area south of the line of W1915 is paved with small stones.
- iii. Did the remains of the south wall of the House of Tyche (W1915) serve as a bench?

Was it rebuilt as a wall? Did it serve as an exit?

- g. After breakfast we sorted the small find in the storage building at Ein Gev and moved CSP gear to the container.